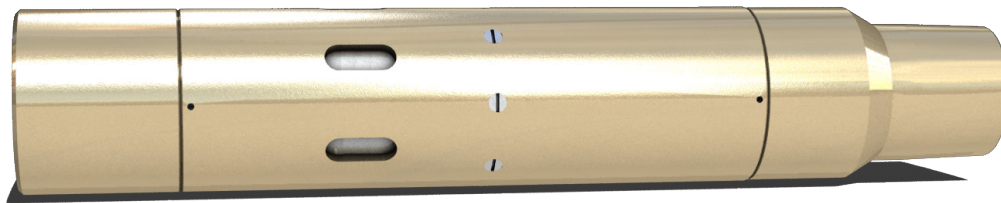


# EZ-PORT™

## FRAC SLEEVE



### COST-EFFECTIVE, COMPACT MULTISTAGE FRAC SLEEVE



The EZ-Port™ is an efficient, cost-effective openhole frac sleeve with erosion resistant millable ball seats. The sleeve allows operators to treat multiple stages with a continuous pump time and reliable ball actuation.

The EZ-Port™ offers up to 31 independently treated stages and its short length and small OD enable it to be easily installed in horizontal wells. The tool's torque-locked internal components allow the seat to be milled quickly in the open or closed position.

The EZ-Port™ is one of Peak's several frac sleeve options. It can be run with a variety of zonal isolation

options, including mechanical and swellable packers. Initial equipment costs as well as operating expenses, such as water, frac fluids, and hydraulic horsepower, are reduced by utilizing this economical solution for multistage stimulation.

The EZ-Port™ can also be run as part of a fully retrievable system, making it an ideal solution for acidizing restimulation projects. The sleeve may be used for additional applications such as a standard tubing drain or to open up the annulus to the tubing for pressure equalization.



## PRODUCT HIGHLIGHTS

- Increase efficiencies by saving time and money on completion operations
- Minimize operational risk
- Quick, easy installation with small OD and short overall length
- Ensure desired frac placement with proprietary ball development and seat design
- Economic design maximizes profits for cost-sensitive projects

## DESIGN FEATURES

- 350°F standard rating – HPHT adaptable
  - 10k psi burst rating
  - Full ID access after mill out
- Anti-torque system allows for mill out in open or closed position
- Erosion resistant ball seats and reliable shear design for high frac rates
  - 31 Stage System Design with HydroPort™
  - LTC, BTC, EU, NU, and premium thread options available

## QUICK TECH DATA

TEMPERATURE RATING	STANDARD PRESSURE RATING		STANDARD CASING SIZES		MAX STAGES
	psi	MPa	in	mm	
HPHT Adaptable	10,000	69	2.875	73.025	12
			3.5	88.9	16
			4.5	114.3	24
			5.5	239.7	31
			7	177.8	38

NOTE: ADDITIONAL SIZES AND HPHT VERSIONS AVAILABLE