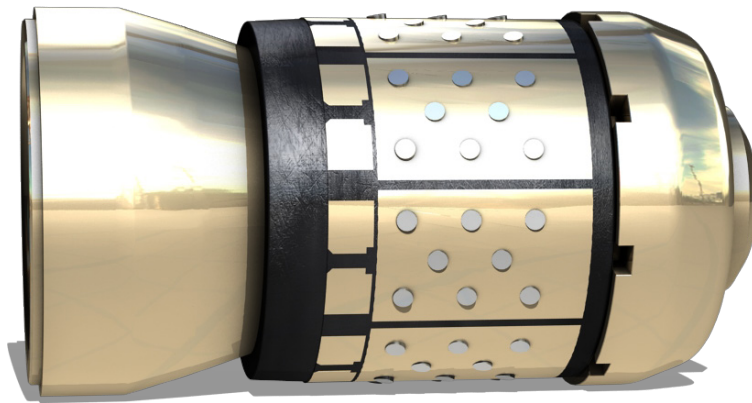


KRONOS™

DISSOLVABLE FRAC BAFFLE

NOW... TIME IS ON YOUR SIDE.

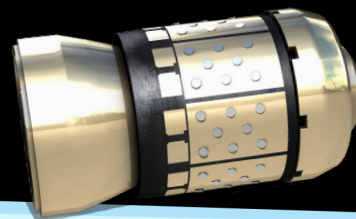


The Kronos™ dissolvable isolation tool is a revolutionary pump-down baffle that dissolves in low temperature, low salinity, or even fresh water wellbore environments. Like the plug and perf method, it is placed in the casing string using a conventional Baker or Go Shorty Hydraulic Setting Tool on wireline. This patent-pending tool is the latest technology developed by Peak Completions.

This tool is used with Peak's proprietary line of Fantom™ dissolvable frac balls and eliminates the need to mill out after treatment. The Kronos™ allows an unrestricted flowback of the reservoir and wellbore, as well as full 10,000 psi differential between stages.

The Kronos™ isolates the stage above it by using a large OD frac ball placed where the conventional composite plug would normally be. Once the Kronos™ and ball are introduced to wellbore fluid, both components begin to degrade. After a successful zonal isolation the result is a full ID unrestricted wellbore eliminating remediation and allowing immediate production.

The Kronos™ tool is formulated using the same dissolvable technology derived from Peak's successful F4 Fantom™ line, resulting in repeatable consistent degradation backed up by years of proven run history.



PRODUCT HIGHLIGHTS

- Engineered blends suited for degradation in all temperature ranges
- Dissolution with no alinity or fluid circulation required
- Full 10,000 psi bottom-hole differential pressure between stages
- Eliminates the need for wellbore remediation after installation
- Isolates the stage above with dissolvable frac ball
- Conventional wireline deployment

DESIGN FEATURES

- Simplistic three piece design
- High strength compact construction
- Tool body and elastomer dissolve at the same rate
 - Integrated anti-preset design
 - Minimal material composition

TECHNICAL SPECIFICATIONS

| PRODUCT NUMBER | SIZE | WEIGHT RANGE | OD | ID | BURST | OVERALL LENGTH |
|----------------|--------|--------------|--------|--------|-------------|----------------|
| 2050-35A-A00 | 3-1/2" | 9.2# | 2.750" | 0.625" | 10,000 psi" | 5.924" |
| 2050-45A-A00 | 4-1/2" | 9.5# | 3.813" | 1.000" | 10,000 psi | 7.350" |
| 2050-45B-A00 | 4-1/2" | 10.5# | 3.781" | 1.000" | 10,000 psi | 7.350" |
| 2050-45C-A00 | 4-1/2" | 11.6# | 3.750" | 1.000" | 10,000 psi | 7.350" |
| 2050-45D-A00 | 4-1/2" | 13.5# | 3.656" | 1.000" | 10,000 psi | 7.350" |
| 2050-45E-A00 | 4-1/2" | 15.1# | 3.563" | 1.000" | 10,000 psi | 7.350" |
| 2050-50A-A00 | 5" | 15# | 4.125" | 1.000" | 10,000 psi | 7.350" |
| 2050-50B-A00 | 5" | 18# | 4.000" | 1.000" | 10,000 psi | 7.350" |
| 2050-50C-A00 | 5" | 21.4# | 3.875" | 1.000" | 10,000 psi | 7.350" |
| 2050-55A-A00 | 5-1/2" | 15.5# | 4.750" | 1.500" | 10,000 psi | 8.693" |
| 2050-55B-A00 | 5-1/2" | 17# | 4.625" | 1.500" | 10,000 psi | 8.693" |
| 2050-55C-A00 | 5-1/2" | 20# | 4.500" | 1.500" | 10,000 psi | 8.693" |
| 2050-55D-A00 | 5-1/2" | 23# | 4.375" | 1.500" | 10,000 psi | 8.693" |
| 2050-55E-A00 | 5-1/2" | 26# | 4.219" | 1.500" | 10,000 psi | 8.693" |